

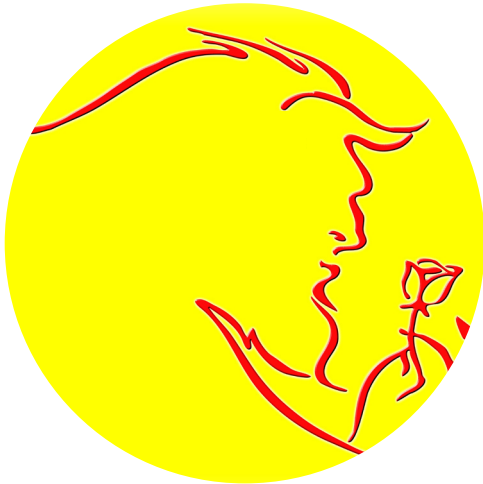
# ACCESS The Hawth Crawley

Welcome to The Hawth Crawley's new season.

Here at The Hawth, we are committed to making your theatre visit an accessible and enjoyable experience.

Ticket prices below are full prices, visually or hearing impaired customers and a companion are generally entitled to a half price discount.

We hope you see you soon!



## Disney's Beauty and the Beast

**Thur 16 – Sat 18 September • Theatre**

**Thur & Fri 7.30pm, Sat 1pm & 5pm**

Multi-award winners Act Too bring to life the beloved 'tale as old as time' with a burst of theatrical magic. Seen by over 25 million people worldwide, this is one of the biggest musicals ever and is pure Disney fun, appealing to the whole family.

**Tickets: Thur: £7. Fri & Sat: £14 (discounts: £12 except Sat 5pm)**

An Act Too (amateur) production

**The Saturday 1pm performance will be audio described.**

## Footloose

**Wed 22 - Sat 25 September • Theatre**

**7.30pm plus Sat 2.30pm**

When Ren and his mother move from Chicago to a small farming town, Ren is prepared for his new high school but not the local laws which include a ban on dancing.

However, Ren can't keep his dancing feet under wraps and soon the young folk of the town are plotting an all-singing, all-dancing prom!

**Tickets: £15 (discounts: £13)**

A Pied Piper Productions (amateur) production

**The Saturday 2.30pm performance will be audio described.**

## My Fair Lady

**Wed 20 – Sat 23 October • Theatre**

**Evenings 7.30pm and Sat 2.30pm**

COS Musical Theatre are thrilled to be bringing Eliza Doolittle and Professor Higgins to The Hawth.

A musical gem with wonderful music, great songs and the magical story of an unrefined Cockney flower girl transformed into a lady.

**Tickets: Wed to Thur: £14 (discounts: £13). Fri and Sat 7.30pm: £14.**

**Sat 2.30pm: £14 (discounts: £12). Child: Wed, Thur, Sat 2.30pm: £10**

A Crawley Operatic Society (amateur) production

**The Saturday 2.30pm performance will be BSL interpreted and audio described.**

**Craig Revel Horwood as Wicked Queen**

## Snow White and the Seven Dwarfs

**Fri 10 December – Sun 2 January**

As BBC's Strictly Come Dancing judge, Craig Revel Horwood, hot-foots it to The Hawth, it is a must to book your tickets early to get the best seats this Christmas.

Don't miss this spectacular, fun-packed, pantomime which promises top class family entertainment.

**Sunday 19 Dec 2pm and 5.30pm will be audio described.**

**Sunday 19 Dec 5.30pm will be BSL interpreted.**





## Blue Bird Club

**Wed 20 October 7pm - 10pm • Studio**

The ever-popular club for people with learning disabilities and their friends. With great DJs and resident band The Coasters. Special guest band Beat Express.

**Tickets £3. Carers Free. Please book in advance to avoid disappointment.**

**Special Supper Menu from 5.15pm - 6.15pm**

**Book a meal and a ticket to Blue Bird Club for £8.50 if booked in advance (£9 on the night) – Clubbers menu includes burgers, pizzas, jacket potatoes and ice cream.**

**A Community Arts/Outreach3Way event**

## Disabled Access

The Hawth Theatre car park, which is situated immediately outside the venue has assigned disabled parking, as well as free parking for cars and coaches.

There is level access into the theatre, which has adapted toilet facilities. Tickets in the front stalls can be purchased for wheelchair users and their companions (available for half price at all Hawth promotions). A wheelchair is also available to you free of charge, which may be obtained from the reception.

## Free Touch Tours

Visually impaired customers and a partner have the opportunity to take a free touch tour prior to shows.

You can feel the stage sets, props and possibly costumes one hour before the start of the show (subject to producer's permission) and may also be able to meet some of the cast. Please ask about availability when you book your tickets and headsets.

## Make The Most Of Your Visit

Why not combine your theatre visit with a meal, or meet up with friends over coffee at The Hawth's ArtsCafé, offering drinks, light bites and more substantial meals.

ArtsCafé is open Monday - Friday from 11am for breakfast, coffee, tea, soft drinks and cakes and then from 12pm - 2pm for our full lunch menu.

The ArtsCafé and bar are also open evenings and weekends prior to all shows. Pre-show meals can be purchased up to two hours prior to most performances until 30 minutes before a show. Tables can be reserved by calling 01293 438150.

## Win a £20 Hawth Voucher

Enclosed with this newsletter is an Access Questionnaire, which we would be very grateful if you could fill in and return to us. All completed questionnaires returned to The Hawth before Fri 30 July will be entered into a draw to win a £20 Hawth Voucher, so fill in your form now - Good Luck!

The winner will be contacted week commencing Mon 2 August.

